

Troubleshooting Guide

Common Issues

Project not working?

Make sure the Breakout Board is charged and turned on.

Component not working?

Make sure that it is plugged into the correct port type on the Breakout Board. Remember to match the symbols.



Sensor Symbol



Servo Motor Symbol

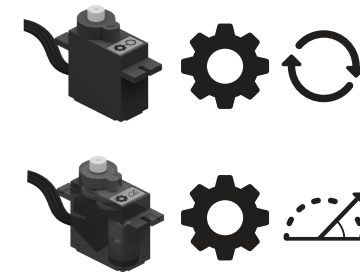
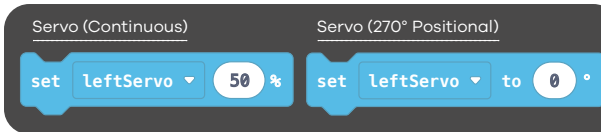
Servo Motors

Are you using the correct Servo Motor?

Continuous Servo Motors are designed for continuous movement, like driving.

Positional Servo Motors are designed to move to specific positions.

Make sure you're using the right code block in MakeCode - there are different blocks for Continuous vs. Positional. Continuous Servo Motors are coded in percentage of power. Positional Servo Motors are coded in degrees.



Have you coded the correct Servo Port?

Ensure your code matches where the physical Servo Motors are plugged in on the Breakout Board: **Left**, **Middle**, or **Right**.



Pairing & Downloading

Is the USB cable plugged into the micro:bit properly?

Make sure the USB cable is plugged in the micro:bit all the way. There will be a light on the back of the micro:bit when it has power! Once connected, you can complete the pairing and downloading process.

Is the micro:bit paired?

In MakeCode, click the **three dots** beside 'Download' and follow the instructions to complete the pairing process.

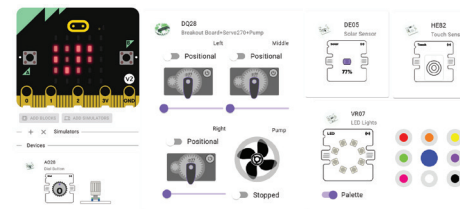


Have you tried refreshing or a manual restart?

If pairing doesn't seem to be working, try disconnecting the micro:bit from the breakout board and attempt to pair again. To manually restart, unplug the micro:bit from the breakout board, switch it off, plug the micro:bit back in and then turn the breakout board back on. You can also try refreshing or restarting the browser window or computer.

Simulators not showing?

Make sure the breakout board is charged and turned on. Make sure only one MakeCode window or tab is open. Make sure you are not using an incognito browser window.



Download

